



Wrinkle Time

February 2010

Upcoming Gathering Dates:

March 7th

Time: 11:00 am

Pet Supplies Plus in Burnsville, MN

May 16th

Time: TBD

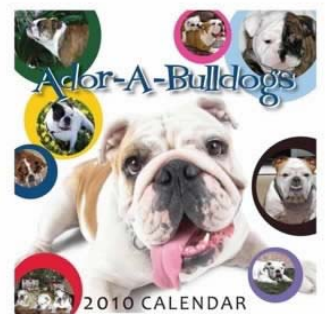
Picnic in the Park

Shakopee Memorial Park, Shakopee MN

Need a calendar?

A cute calendar? A calendar that benefits rescue? Only \$5 at the March Wrinkle Time. Every penny of this \$5 goes to your LOCAL rescue. Did I mention it was waaay cute too?

Rescue will also be selling crate pads for \$10 at the Picnic in May!



No Bull. Just fun

For permission to reprint articles email karen@pantheonbulldogs.com

These articles are not necessarily the opinion this editor nor participants of Wrinkle Time. Information contained therein is NOT substitution for professional advice.

Good Deeds



GIZZY

A few days ago, I received a call from Gizzy's "mom". Gizzy is doing great and Debbie adores her. She said that Gizzy lets her shower her with kisses and that was important to Debbie. She wanted a cuddler and she got that with Gizzy. She also gets long fine with their other Bulldog, Mattie.

We have some great news to report about Gizzy -- she no longer sounds like a percolator! While in rescue, Gizzy required long-term antibiotic treatment with "big gun" antibiotics to help clear the chronic bronchitis and lung congestion that she had suffered from for quite some time. Her soft palate was also clipped, which helped her breathing as well. She was in foster care for over two months while we tried to get her healthy before rehoming her.

I was happy to learn that Gizzy is no longer on bronchial dilators or antibiotics and seems to be managing just fine without them. We weren't sure just how much lung function Gizzy would recover, as x-rays showed considerable congestion when she first came into our care. However, it appears she has surpassed even our most optimistic predictions. Gizzy's veteri-

Good Deeds

nary expenses while in rescue were considerable, but given the favorable outcome, we consider it money well spent.

Gizzy is a good example of why rescue groups need to fundraise. In many cases, the adoption donation covers the expenses for that dog, but if a dog needs more than basic booster vaccinations and a neuter or spay, veterinary expenses can quickly exceed the amount of the average adoption donation. Veterinary expenses take up a big chunk of a rescue group's budget.

The volunteers in our rescue group decided early on that we did not want to have to euthanize a Bulldog just because the treatment to fix a problem could be expensive. We wanted to make sure that every rescue dog that came in would be able to get the veterinary care it needed -- provided the attending veterinarian gave it a good prognosis for a reasonable life span free from chronic pain.

Occasionally rescue groups do have to euthanize dogs. It is not pleasant, but sometimes necessary to ease the suffering of a dog with too many serious health issues that cannot be fixed. In these cases, they are euthanized upon the advice of the attending veterinarian. It is most certainly not a decision made lightly. But for the cases where medical intervention is an option, we do not want to have to euthanize any dog that is deserving of a great home simply because we did not have the funds to fix them.

In May, Wrinkle Time will again be having a picnic in the park and Love-a-Bull Rescue will also be having its annual silent auction fundraiser. If you have anything to donate to the silent auction please contact Marcia at: shortlilme@msn.com or Rita at: rita@reingoldbulldogs.com . Even if you cannot donate, please be sure to attend the picnic and bid generously, if you are able. Thank you all for your generous support.

- Rita Guthmiller
Love-a-Bull MN Bulldog Rescue



Household toxins

Dana Huntington VT, The Natural K9

We all know there are foods and items around the house that are toxic but do you know what the signs of toxicity are?

Grapes/Raisins - Signs of toxicity include vomiting and diarrhea, signs of kidney disease within 24 hrs. Some dogs handle grapes and raisins better than others and toxicity depends on the size of the dog, age/breed and if any kidney disease is already present. Grapes are heavily sprayed with pesticides, one of the most heavily sprayed crops. There is some speculation to this being the cause of kidney failure but is not proven.

Garlic - Has been used in dogs for over 4,000 years. Garlic is a great natural flea and tick repellent. 1 clove of garlic is safe, 1 handful may cause intestinal upset and vomiting.

Onions -hemolytic anemia, difficulty breathing and potentially death. It is thought that small amounts will not harm a dog but each dog is unique and it is better not to take the risk.

Chocolate - Caffeine and theobromine in chocolate may cause - increased heart rate, excitement, pancreatitis, increased urination, muscle tremors, intestinal upset, vomiting, and potential death.

The dose which half of the dogs exposed to a substance will die is about 100mg chocolate per kg (2.2lb) dog.

The approximate toxic dose per pound of body weight:

Milk chocolate - 1 ounce per 9 pounds of body weight .

Semi-sweet chocolate - 1 ounce per 3 pounds of body.

Bakers chocolate - 1 ounce per pound of body weight.

Peach pits - cyanogenetic glycosides, when processed by the body the resulting product is Cyanide - Weak immune system, paralysis, death at high doses. Peaches themselves are safe but should be fed in moderation due to high sugar content but the pits should be avoided at all costs.

Macadamia Nuts - Can cause lethargy, muscle tremors, weakness, depression, vomiting, increase body temperature and paralysis. In most cases dogs develop clinical signs within the first twelve hours post ingestion.

Anti-freeze - Ethylene Glycol - The first sign to generally appear is depression, signs of intoxication similar to alcohol ingestion, vomiting, depression, coma and death may occur among the initial signs of poisoning. Severe kidney failure causes vomiting, sores in the mouth, a noticeable increase in oral odor, severe depression and then eventually coma and

Household toxins

death. Symptoms may subside after 12 hrs giving many owners the sense the danger has passed. Treatment needs to be initiated within the first 5 hrs for dogs and even sooner for cats.

Approximate lethal dose for dogs is 4.4 ml - 6.6 ml per 2.2 lbs and cats 1.4 ml per 2.2 lb. 1 tsp has the potential to kill a 7 lb cat.

Unfortunately dogs and cats are very attracted to anti-freeze, most reports of ingestion are from improper disposal after flushing a cars system.

There are 2 products on the market, Sierra and Sta-Clean which are reported to be LESS toxic as they contain propylene glycol. Now take a look at the ingredients of those nice soft chewy treats you just bought your dog, what are they preserved with???

Tylenol - Signs of toxicity include drooling, lethargy, abdominal pain, and liver failure. As little as two regular strength Tylenol tablets can kill a small dog. Dogs lack the proper liver enzymes to break down acetaminophen. This applies to other over-the-counter anti-inflammatory as well. Aspirin is the only "safe" human over-the-counter anti-inflammatory for dogs but should be given to dogs. Consult your veterinarian prior to giving all medications to your dog.

Lilies (and other house plants) - Depending on the species can cause ulcers of the mouth and tongue, vomiting, intestinal upset, abdominal pain, seizures and death. Ulcers of the mouth are more common than the other symptoms but it's dependant on how much was ingested, type of plant, and size of the dog, cats are more sensitive to these than dogs but can happen to either.

Sugar-free gum - Xylitol - liver damage, seizures or even death. Many dogs are fine after ingesting a few pieces of gum but it is dependant on quantity ingested, and the individual animal. Dogs that are known to have seizures may be at higher risk for seizures than a dog of the same breed, age and weight would be.

Organophosphates (lawn chemicals) - excessive salivation, "wet" respiratory sounds, diarrhea, slow heart rates and pinpoint pupils. When removed from exposure symptoms may or may not subside, many dogs develop severe allergies and even cancer after repeated exposure.



036 a g s

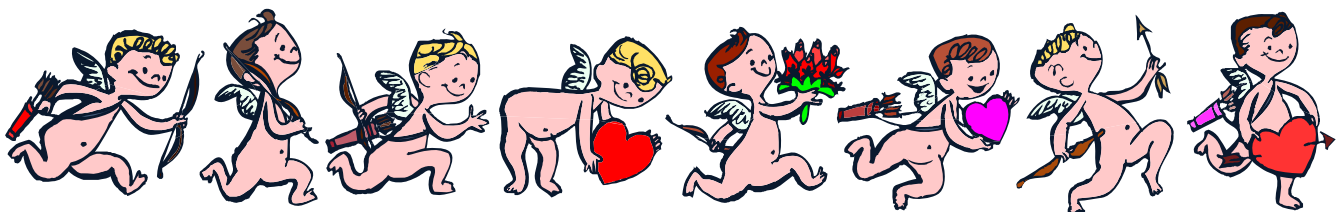


Here is a photo of Angus.
He turned 2 on January
22nd.

He is pictured in the crate
of my Jack Russell Terrier,
which he hijacked!

Elysia

Booko will be 3 on February 9th. -Sarah



You Wrote the Caption

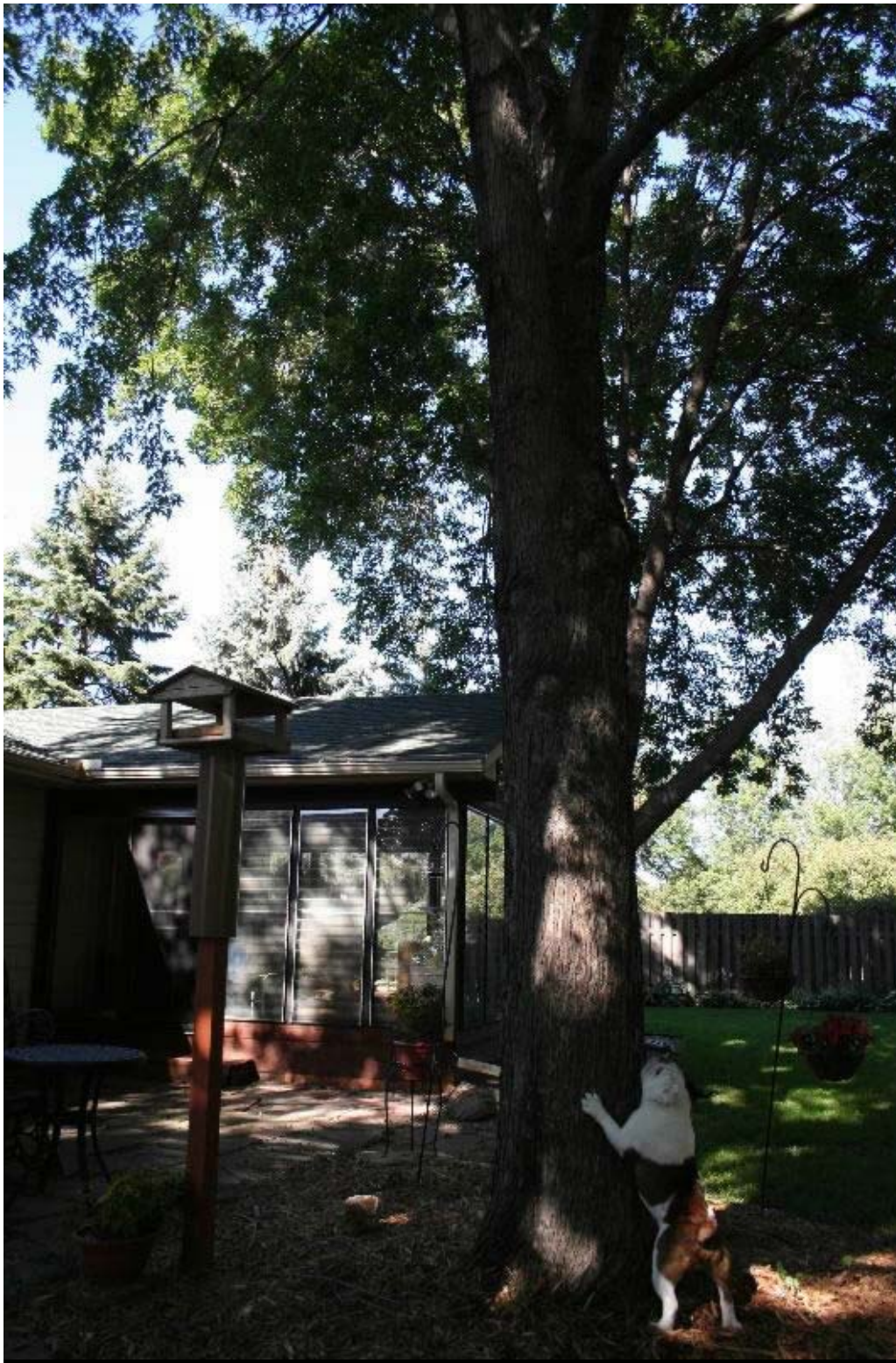


- ◆ Love comes in all forms
- ◆ Who says these inter-species relationships don't last?
- ◆ You smell better than me
- ◆ New perfume?
- ◆ (Kitty) Vulcan mind meld must work, I am not a toy, I am not a toy, I am not a toy...
- ◆ You are my sunshine, you are my sunshine, you make me happy when skies are gray.
- ◆ Hmmmm, I wonder what this thing is? It doesn't smell like a dog, it doesn't look like a dog and it sure doesn't sound like a dog.
- ◆ Excuse me, I was sitting here first.
- ◆ Wonder Twin powers....activate!
- ◆ Will you be my Valentine?
- ◆ True love.
- ◆ You know, our friends will never understand!
- ◆ Let me whisper sweet nothings in your ear for Valentine Day:
- ◆ AWWWH
- ◆ Soft and cuddly like my babies, but you don't smell the same
- ◆ Opposites attract..

I was given a Ragdoll kitten, Parker, for Mother's Day. Ragdoll cats, are very fearless. I was worried about Parker, getting along with our Bulldogs, Tank and Dozer, but as you can see we are one big happy family. --Robin

Thanks for the cute picture Robin!

You Write the Caption



**You write the
caption. Send
your caption to
Karen at
karen@pantheon
bulldogs.com**